

## Cost-effective Flexible Communications Solution



**IntelliTruck™ is a flexible integrated solution that optimizes your fleet efficiency, maximizes productivity and saves you money.**

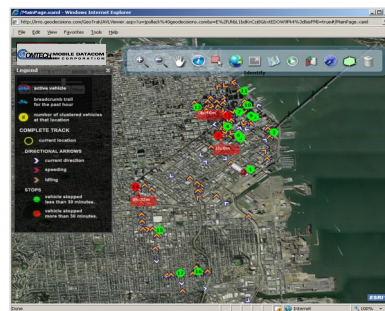
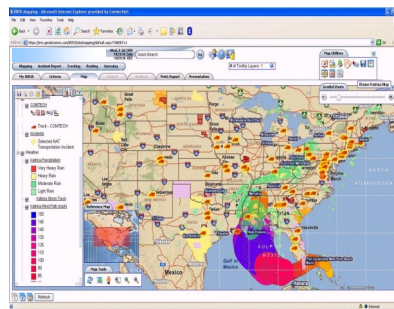
- » **Flexible** solution to meet your logistics requirements
- » Improve **fleet safety** by reducing risky driver behavior
- » Improve **customer satisfaction** through optimized dispatching and communications applications
- » **Remote Over-the-air updates** reduce platform management costs
- » Meet and maintain **regulatory compliance**

**Increase productivity, safety and compliance**

**FEATURES & BENEFITS**

- » **Electronic Hours of Service Application** - Get more accurate logs with less driver preparation time
- » **Accident Reconstruction**- Accurately know what happened when an accident occurred
- » **Driver Verification Inspection Reports** - Improve fleet safety and meet CSA 2010 safety rules
- » **Route Planning and Dispatch** - Reduce your fuel usage and improve on-time customer deliveries
- » **Vehicle Tracking** - Know where your vehicles are in real-time for more efficient fleet utilization
- » **Vehicle Maintenance and Diagnostics** - Stay ahead of your vehicle maintenance by getting real-time diagnostics and automated alerts

**See your data the way you want it**



IntelliTruck's web based fleet management application provides visibility into driver and fleet behavior. With pre-defined reports, raw data captured by the Mobile Data Computer is quickly converted to actionable information.

- Real-time asset tracking and locations
- Driver Time and Attendance
- Routing/dispatch/ETA information
- Electronic hours of service application
- Custom role based reporting
- Exception based reporting and alerting (Off Route, Speeding, Idle, Harsh Breaking and Acceleration)
- Driver performance report card
- Maintenance and driver CDL status alerts
- Geo-fencing/geo-coding
- Accident reconstruction
- Messaging
- Driver behavior monitoring
- Web access from any browser
- Multiple display options (4.3" or 7")
- Four analog inputs/digital inputs and four outputs for sensor integration

**Data and Support when you need it**

Comtech's Data Center is maintained by a **24x7x365 Network Operations Center** with highly-trained technical support staff that address a wide range of applications, network issues and devices. Our secure Network Operations Center is equipped with comprehensive process monitoring tools and applications to ensure your data is secure and always available when you need it.



## Rugged & Compact Components, designed for your needs



In-Cab Display

Comtech's on-board system consists of two flexible Components: A low-profile **Mobile Data Computer** and a color, touch screen **In-Cab Unit Display**. Both are designed to meet your specific needs from small to large business requirements

- Multi-mode communications (Cellular, Satellite, WiFi and Bluetooth)
- Business rule based data communications
- Active GPS navigation system
- Supports multiple vehicle diagnostics protocols (OBD-II, J1708/J1587, J1939 CAN)
- On-board data capture (accelerometer, odometer reading, ignition detection)
- Easy to use integrated touch screen display available in multiple display options (4.3" or 7")
- Four analog inputs/digital inputs and four outputs for sensor integration
- Real-time clock with battery back up
- Easy installation
- Multiple interface (USB, Micro SD, RS-232, RS-485)



Mobile Data Computer



Satellite Transceiver

## FEATURES & BENEFITS

- » **Predict and Modify Driver Behavior** - Improve overall fleet safety with data to manage driver behavior
- » **Upgradeable Platform** - Hardware supports future application upgrades
- » **Over the air (OTA) upgrades** - Remotely install new applications without servicing the vehicle
- » **Automated IFTA fuel tax reporting** - Reduce driver paperwork and improve data accuracy, capture all allowable fuel tax credits
- » **Timely and accurate office to driver communications** - Get information to your drivers when you want

## Protecting your investment today for the future

IntelliTruck's platform is a customizable application that easily adapts to any business requirement. IntelliTruck offers on-board processing power and memory, supportable operating system and flexible communication options to support your business needs today and in the future.

Comtech Mobile Datacom Corporation

20430 Century Blvd Germantown, MD 20874 USA | Tel: 240 686 3300 | Email: [intellittruck@comtechmobile.com](mailto:intellittruck@comtechmobile.com)

[www.comtechmobile.com](http://www.comtechmobile.com)

## How it Works



### CONTACT US

intellitruck@comtechmobile.com  
240 686 3300  
www.comtechmobile.com

### Comtech Mobile Datacom

Comtech Mobile Datacom is the premier provider of satellite based asset and vehicle tracking equipment and associated network infrastructure, which supports on-the-move, satellite communications. We have fielded over 200,000 L-band satellite devices used for asset tracking, vehicle tracking, Situational Awareness (SA) and Command and Control (C2) messaging. Our solutions are used on tracked and wheeled vehicles including Abrams M1A1 tanks, Humvees, military emergency vehicles, cargo carriers, and covert installations on unmarked cars. Comtech Mobile Datacom is a wholly-owned subsidiary of Comtech Telecommunications which delivered \$778 million in revenue in 2010 and yields market capitalization of over \$750 million. Comtech Mobile Datacom through its parent company has the financial stability to execute very large contracts.